

Art. 1

Girella

Nut

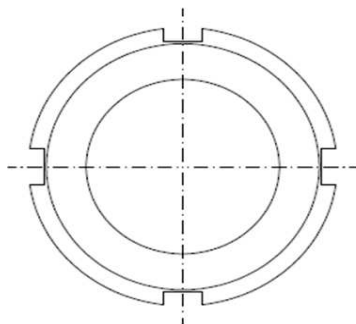
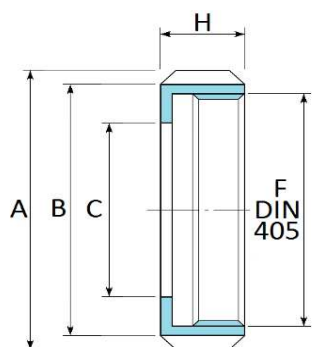
Ecrou

Nutmutter

DIN 11864-1 :2009

DIN 11851 :1989 DIN 1

DIN 11851 :1998 DIN 2



DN	10	15	20	25	32	40	50	65	80	100
A	38	44	54	63	70	78	92	112	127	148
B	32	38	48	56	62	70	84	102	117	138
C	19	25	31	36	42	49	62	80	94	115
F	28x1/8"	34x1/8"	44x1/6"	52x1/6"	58x1/6"	65x1/6"	78x1/6"	95x1/6"	110x1/4"	130x1/4"
H	18	18	20	21	21	21	22	25	30	31
PN	40	40	40	40	40	40	25	25	25	25

Art. 8

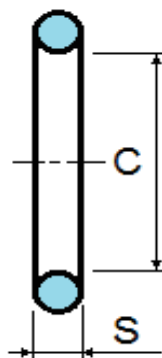
Guarnizione DIN 11864-1

Gasket DIN 11864-1

Joint DIN 11864-1

Dichtring DIN 11864-1

DIN 11864-1 :2009



DN	10	15	20	25	32	40	50	65	80	100
C	12	18	22	28	34	40	52	68	83	127
S	3,5	3,5	3,5	3,5	5	5	5	5	5	5